

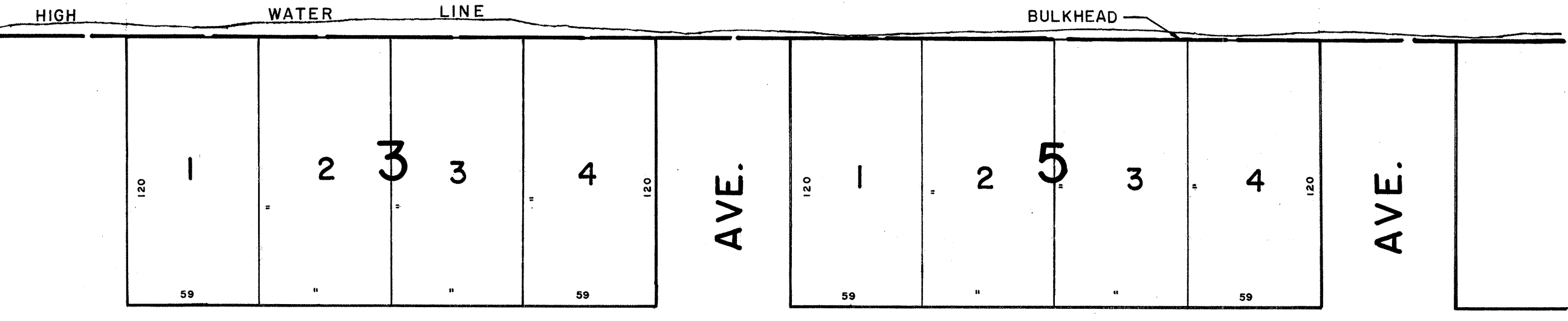
ORIGINAL LINE OF GRANT TO JAMES LONG, FEB. 5, 1881

### RISLEY'S CHANNEL

INLET

EXEMPTED BOROUGH OF LONGPORT

120



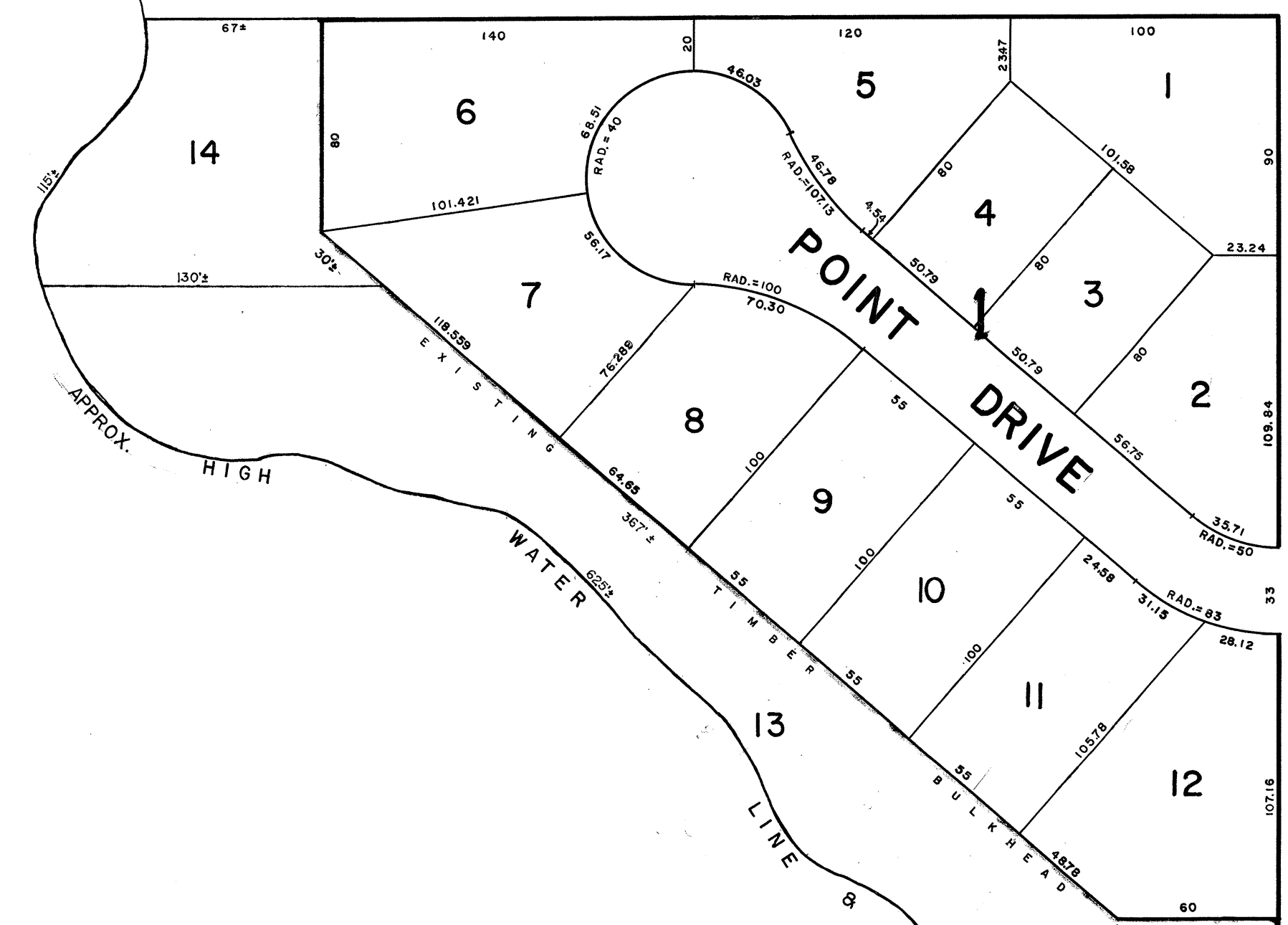
### ATLANTIC AVE.

HARBOR

EGG

GREAT

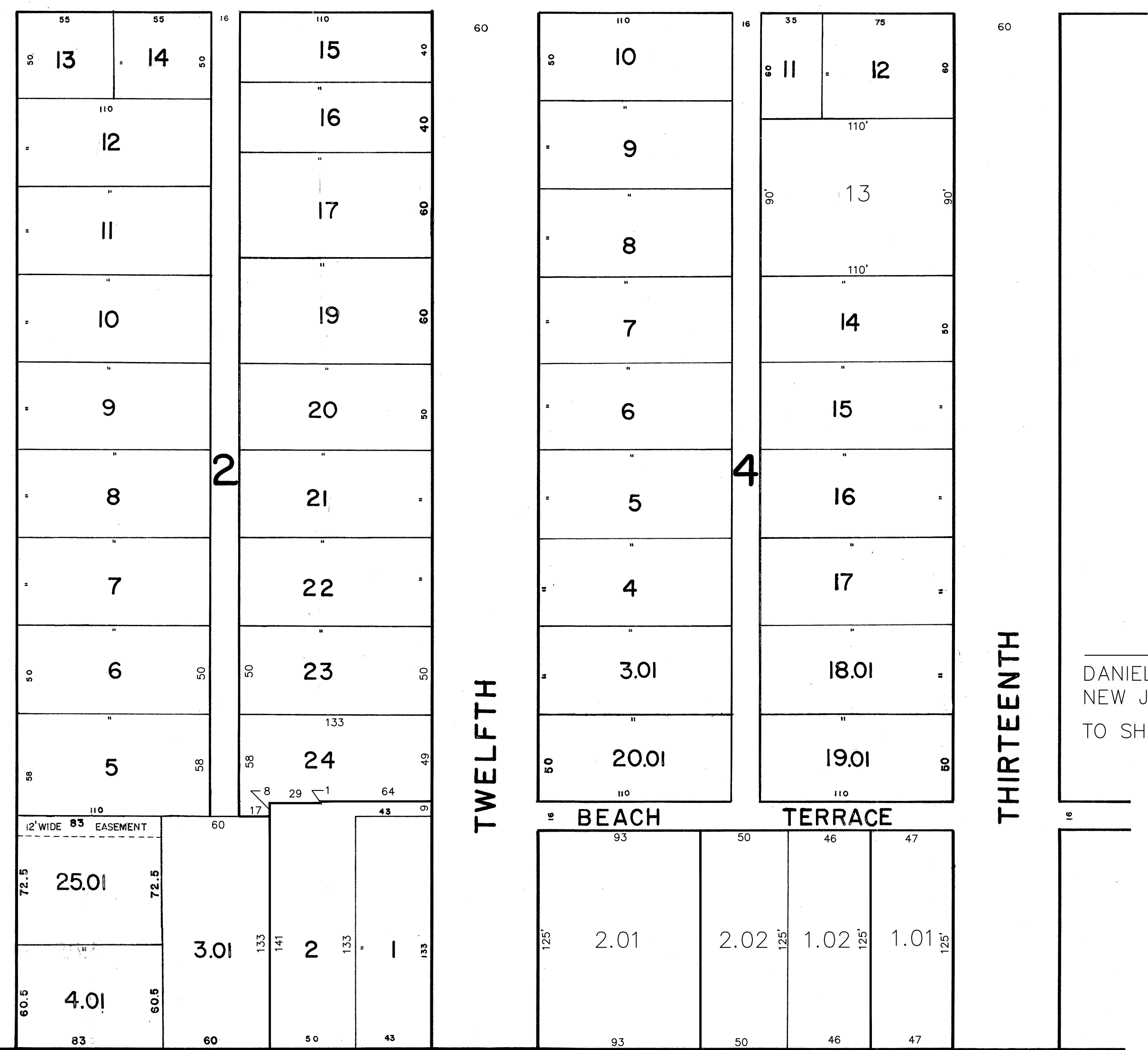
EXISTING STONE JETTY



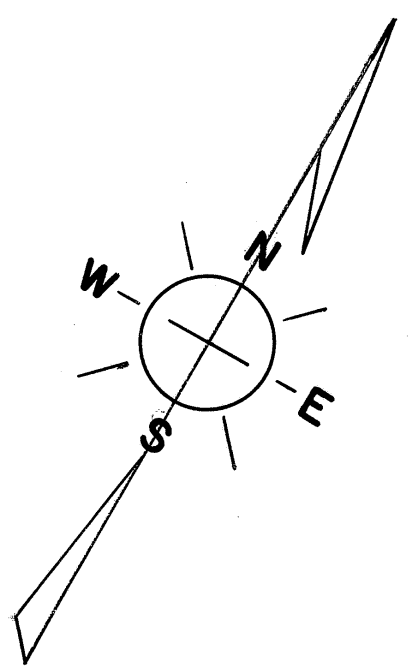
ELEVENTH AVE.

TWELFTH

THIRTEENTH



### BEACH AVE.



### ATLANTIC

ELECTRONIC COPY  
 DANIEL J. PONZIO SR.  
 NEW JERSEY LIC. #GS37603  
 TO SHOW CONDITIONS AS OF JUNE, 2017

NEW JERSEY DEPARTMENT OF THE TREASURY  
 DIVISION OF TAXATION  
 PUBLIC UTILITY TAX BUREAU  
 APPROVED AS A TAX MAP PURSUANT TO THE  
 PROVISIONS OF CHAPTER 175, LAWS OF 1913, ETC.  
 FOR THE DIRECTOR, DIVISION OF TAXATION.  
 BY *J. H. Ponzio* S.E.L.S.  
 LIC. #5009 STATE SUPERVISOR  
 DATE DEC 8 1970 SERIAL No. 498

## TAX MAP

OF THE  
 BOROUGH OF LONGPORT  
 ATLANTIC COUNTY, N.J.

SCALE: 1" = 50'  
 REV. JAN. 1970

J. THOMAS WOOD, JR., P.E. & L.S. NO. 8139  
 GEORGE E. SCHILLING L.S. NO. 16198  
 421 GUARANTEE TRUST BLDG.  
 ATLANTIC CITY, N.J.

DATE	REVISION	BY
5/2017	BL 4, L 2 ADD SUB - BL 4 L 13 COMBINE LOTS	PER DC
9/2009	BLOCK 4, LOT 2 - DELETE SUBDIVISION	PER T.A.
2/2007	BLOCK 4, LOT 1 - SUBDIVISION	M. ENG
2/2007	BLOCK 2, LOTS 2, 3, 01, 24 - SUBDIVISION	M. ENG
5/2001	BLOCK 4, LOT 13, SUBDIVISION	CBA
5/2001	BLOCK 4, LOT 2, SUBDIVISION	CBA
12-1-92	GENERAL - PER NA. DEPT. OF TREASURY	CBA

ADJOINS SHEET 3